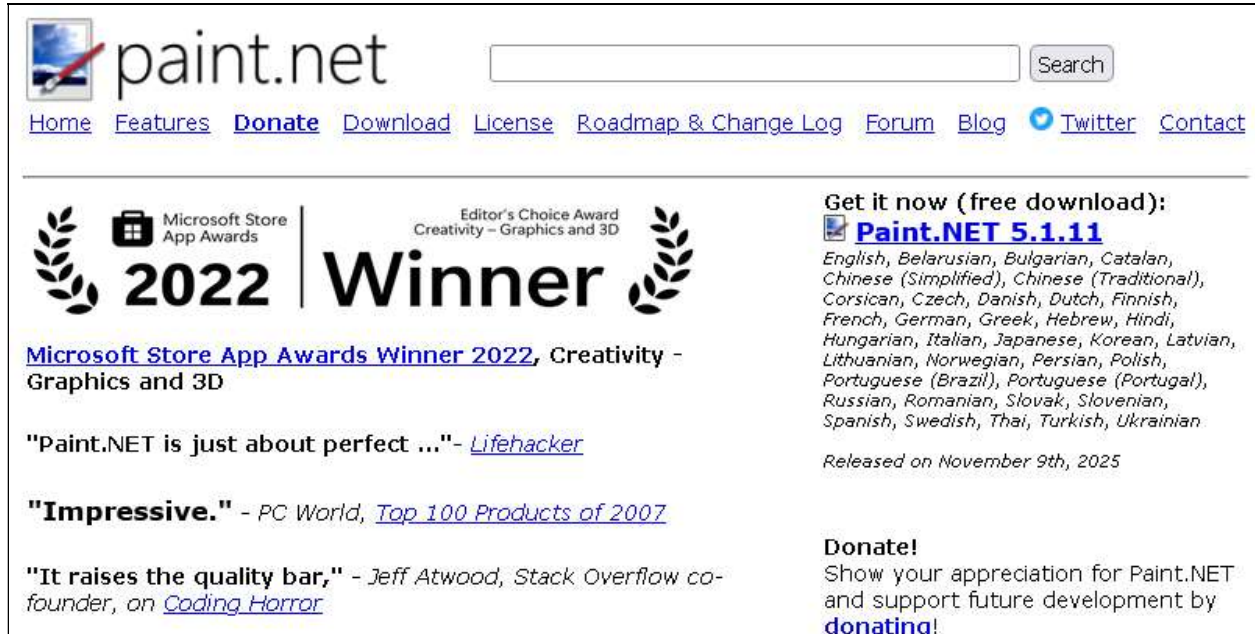


Paint.Net for Cab That Slab

Paint.Net is a graphics/photo editor for Windows. It is free.



The screenshot shows the Paint.NET website homepage. At the top left is the Paint.NET logo. To its right is a search bar. Below the logo are navigation links: Home, Features, Donate, Download, License, Roadmap & Change Log, Forum, Blog, Twitter, and Contact. The main content area features a large award banner for the Microsoft Store App Awards 2022 Winner in the Creativity - Graphics and 3D category. To the right of the banner, there is a section titled "Get it now (free download):" followed by a link to "Paint.NET 5.1.11" and a list of supported languages. Below this is a "Donate!" section with a call to action to support future development.

paint.net

Home Features [Donate](#) Download License Roadmap & Change Log Forum Blog [Twitter](#) Contact

Microsoft Store App Awards
2022 | **Winner**
Editor's Choice Award
Creativity - Graphics and 3D

[Microsoft Store App Awards Winner 2022, Creativity - Graphics and 3D](#)

"Paint.NET is just about perfect ..." - [Lifehacker](#)

"**Impressive.**" - PC World, [Top 100 Products of 2007](#)

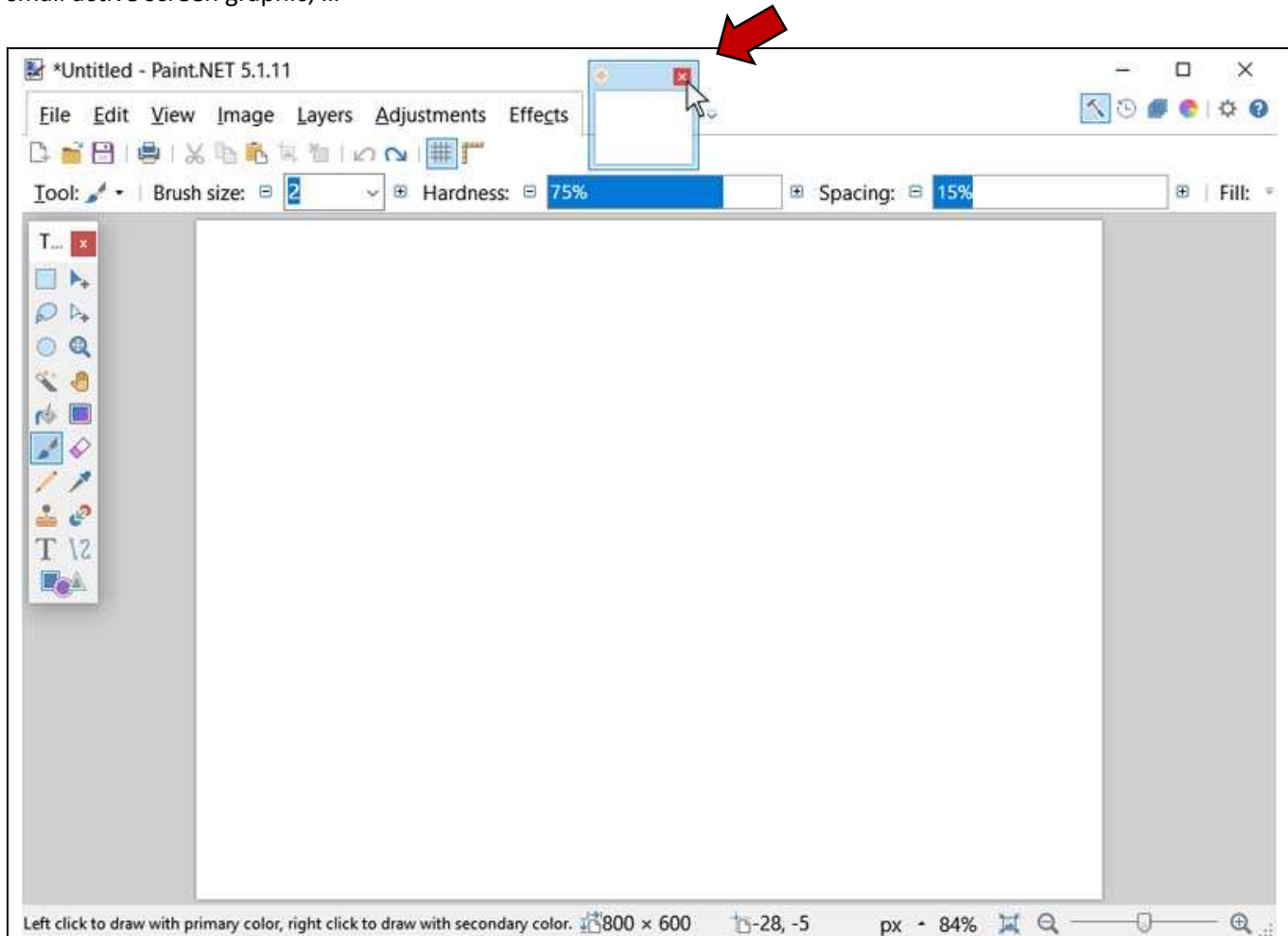
"It raises the quality bar," - Jeff Atwood, Stack Overflow co-founder, on [Coding Horror](#)

Get it now (free download):
[Paint.NET 5.1.11](#)
English, Belarusian, Bulgarian, Catalan, Chinese (Simplified), Chinese (Traditional), Corsican, Czech, Danish, Dutch, Finnish, French, German, Greek, Hebrew, Hindi, Hungarian, Italian, Japanese, Korean, Latvian, Lithuanian, Norwegian, Persian, Polish, Portuguese (Brazil), Portuguese (Portugal), Russian, Romanian, Slovak, Slovenian, Spanish, Swedish, Thai, Turkish, Ukrainian

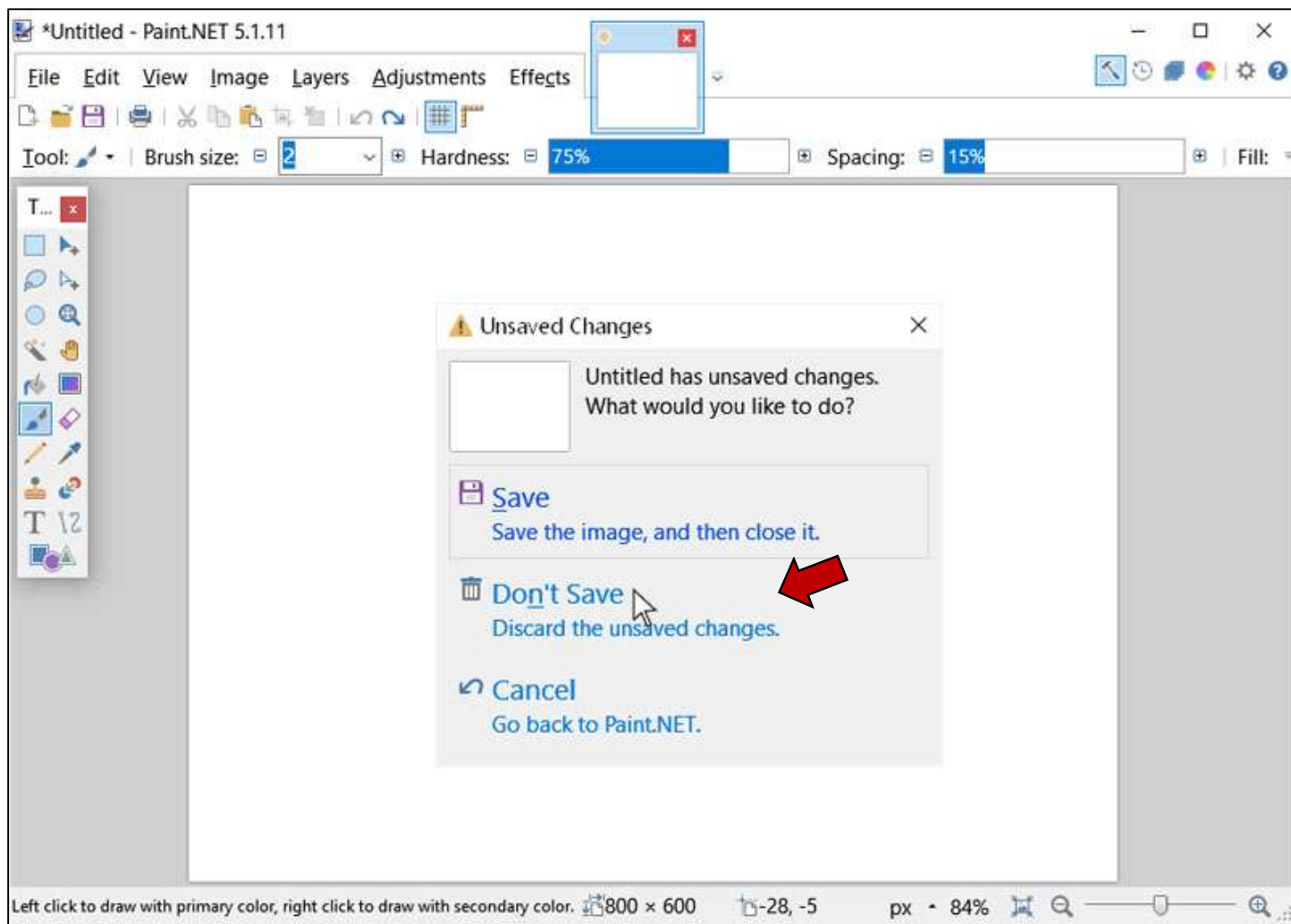
Released on November 9th, 2025

Donate!
Show your appreciation for Paint.NET and support future development by [donating!](#)

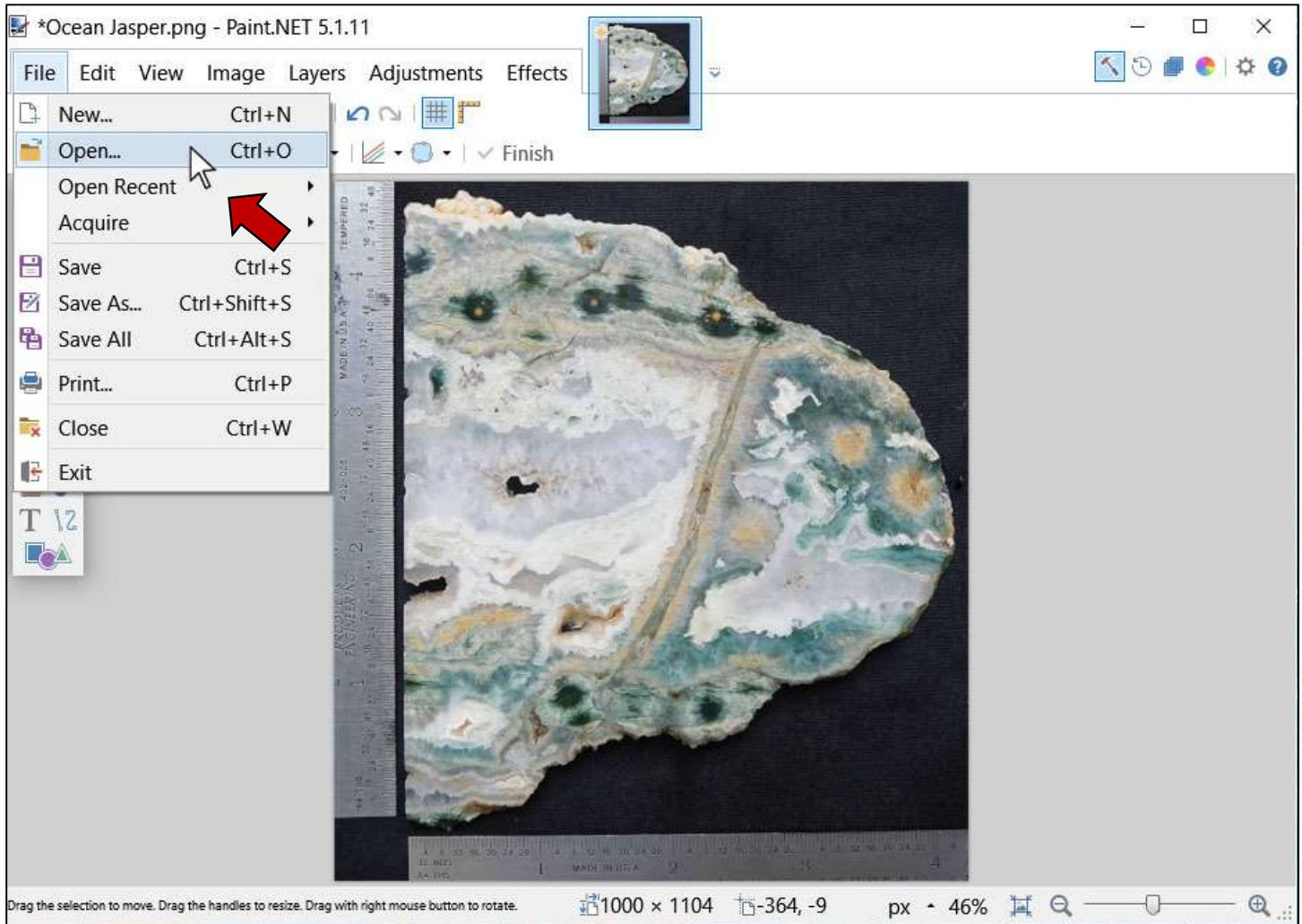
Open Paint.Net. It opens with a default canvas, which is not needed. You can delete it by clicking on the **red X** on the small active screen graphic, ...



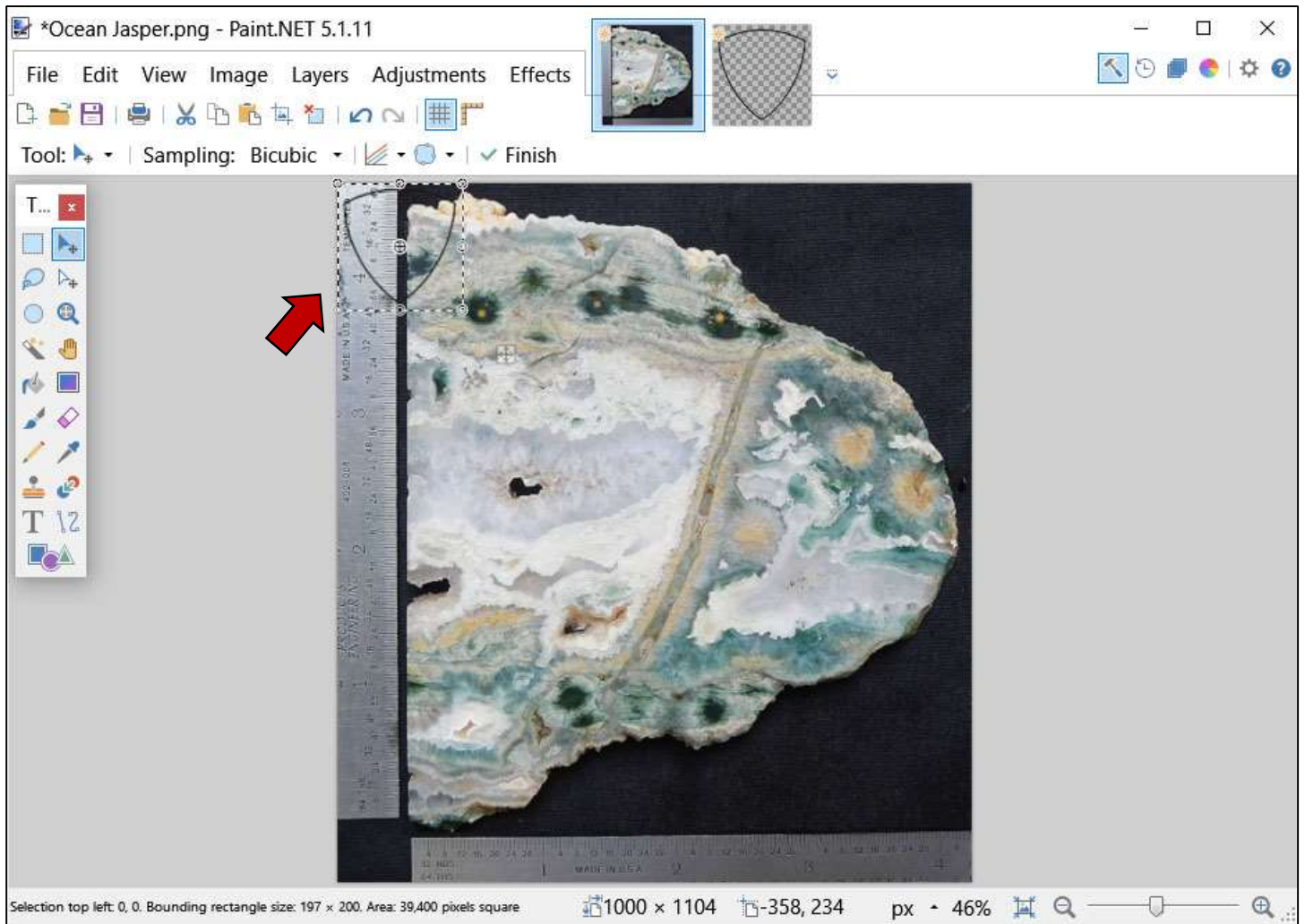
Then click on “Don’t Save” to remove that canvas:



Now click on **File, Open** and select the slab image to open it as a first layer (as shown):

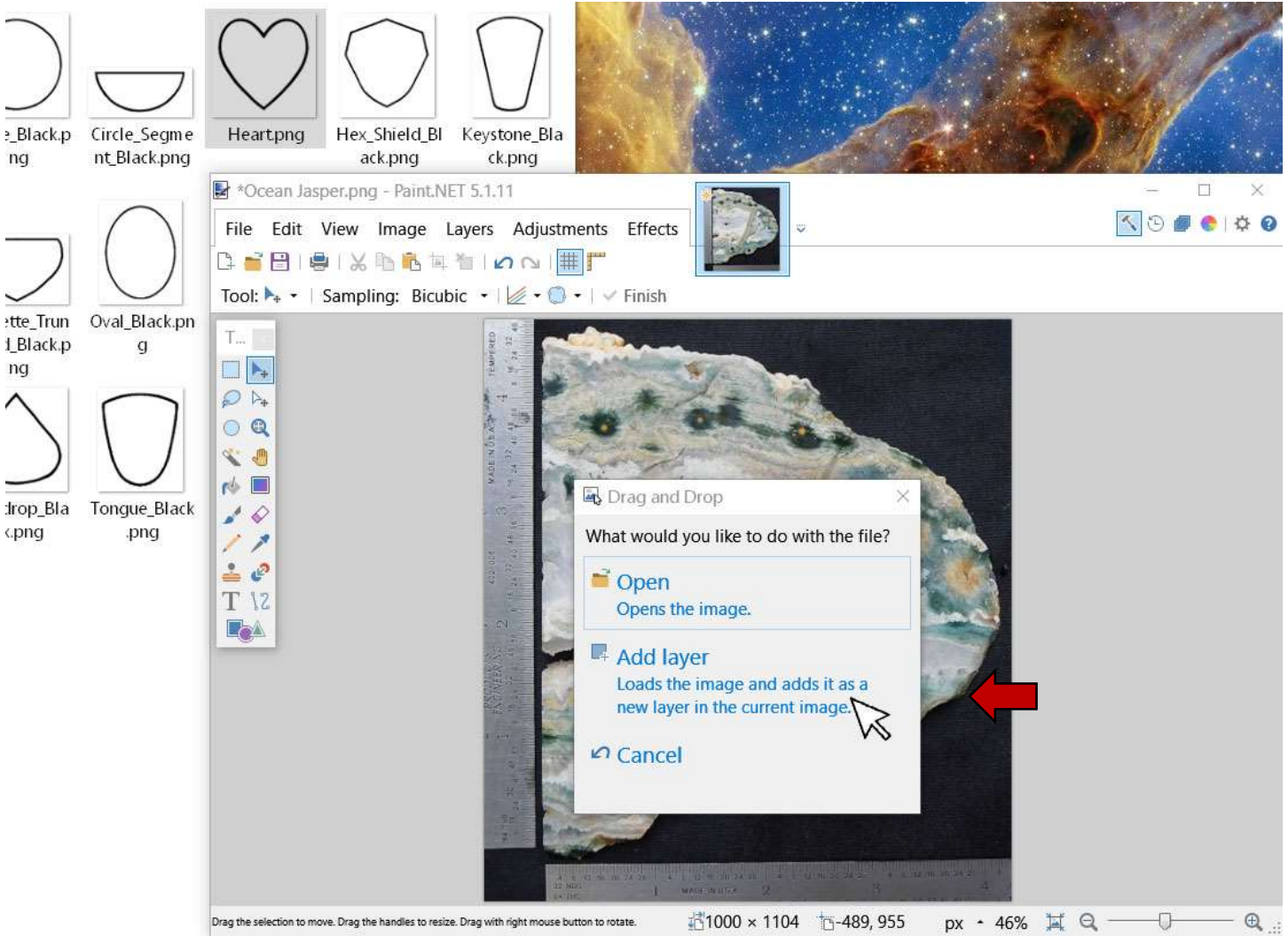


Now, open the folder with the cab template PNG files (from RTH or stored on your hard drive), copy the one you want, (Cntrl + c) and paste it into Paint.Net (C, Cntrl + v). Note that it will appear in the top left corner of the canvas in its own layer:



Here's an alternative way to directly get a template into a new layer that may work for you (thanks, rockjunquie!):

1. Open the folder that has the template files.
2. Select the desired template PNG file and drag it onto the slab image. That will open the dialog shown below.
3. Select "Add layer".



Now you can move the template to where you want. You can also rotate it, enlarge it, shrink it, make it wider, narrower, longer, or shorter using the "handles" that appear on the sides and corners as you move your mouse.